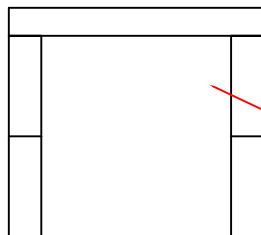
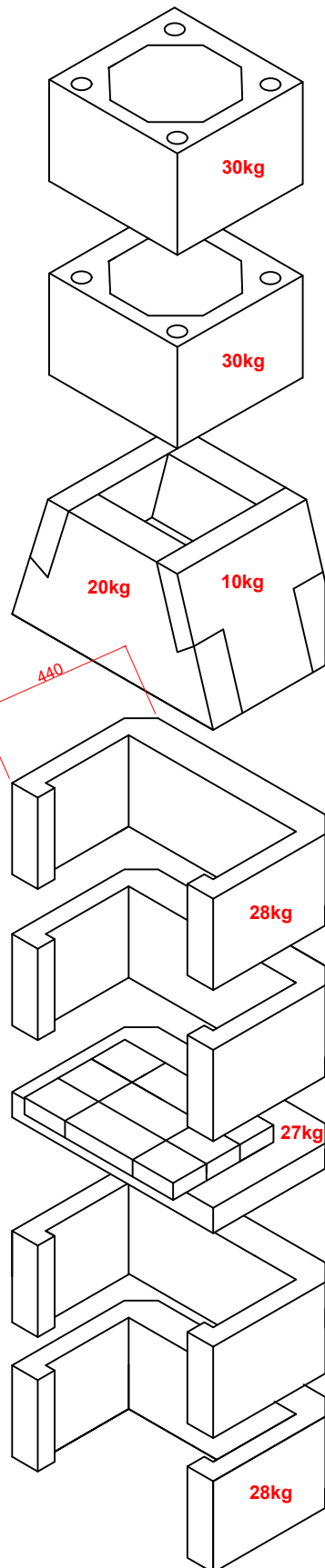


BBQ Grill  
500x300mm



Extra Side Log  
Store If Required



Measure in mm

A suitable concrete base is required to bed the garden fireplace onto.

All the pumice components to be glued with lip glue using the application bags provided. Mix the lip glue as per instructions on the bag and fill application bag. Cut a 15-20mm piece off the end of the bag to create 15-20mm beads of lip glue when squeezed, apply to the pumice block surface as per sample picture. Use a spirit level to check and level as you go. The finished lip glue joints should be 2-3mm thick.

The external surface of the fireplace can be coated with the enclosed render mix supplied and or painted with masonry paint.

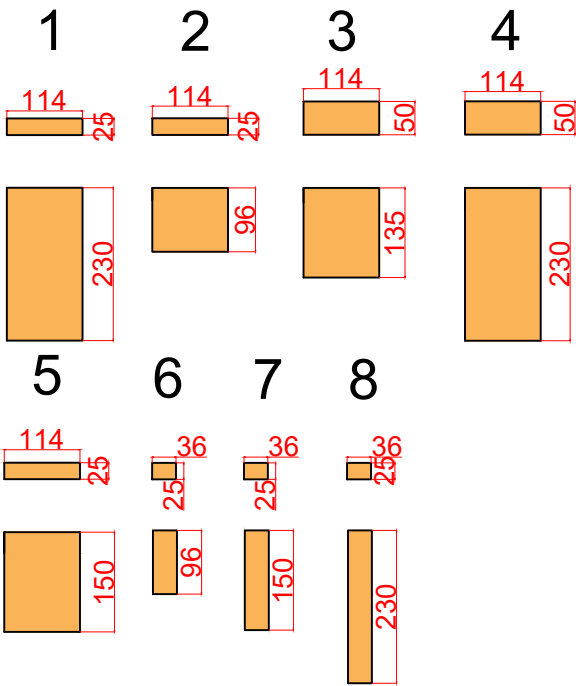
Subject:

Garden Fire 500 Installation Details

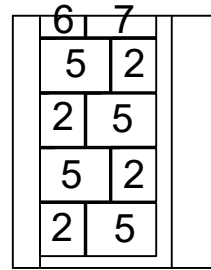
	Area:	Scale:	Date:	Drawing No:
		dm <sup>2</sup>		G500 ID
TEL (01202) 861650 FAX (01202) 861632 www.schiedel.co.uk	Mass:	Tol.:	Rev.:	Drawn By:
	l.	± 3 mm	1	T Oliver
	Material:			
	Pumice			

Garden Fire 500 Fireplace  
Installation Details

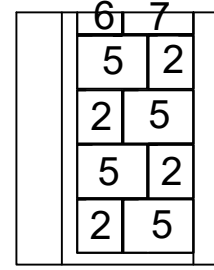
# FireBricks



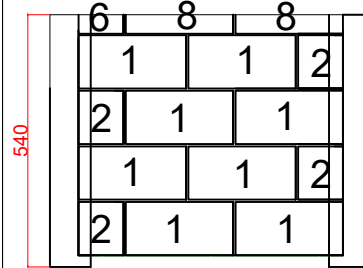
Left Side View



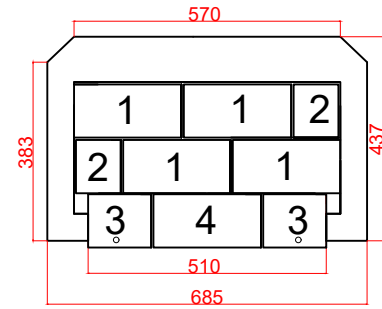
Right Side View



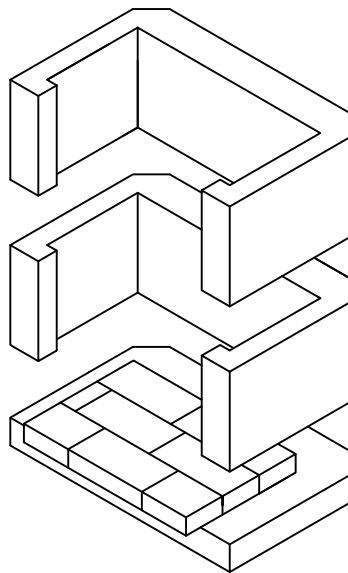
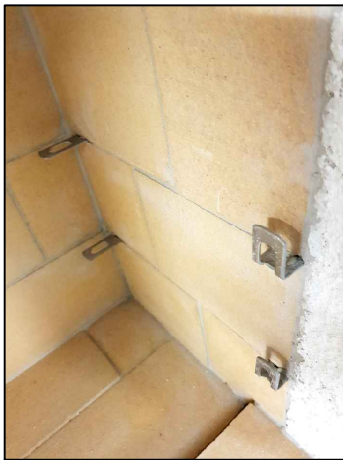
Back View



Base View



Inset grill supports when fitting the firebricks



firebricks to be glue on and pointed with the calderys firebrick mortar as per enclosed instructions

Subject:  
Garden Fire 500 Plan

**SCHIEDEL**

ISOKERN®

TEL (01202) 861650  
FAX (01202) 861632  
www.schiedel.co.uk

Area:	Scale:	Date:	Drawing No:
dm <sup>2</sup>		24/04/19	G500 Plan
Mass:	Tol.:	Rev.:	Drawn By:
l.	± 3 mm	2	T Oliver
Material:			
Pumice			

Garden Fire 500 Firebrick Plan